



GMT MONTHLY MEMBERSHIP PROGRESS REPORT

Results as of: 7/31/2019

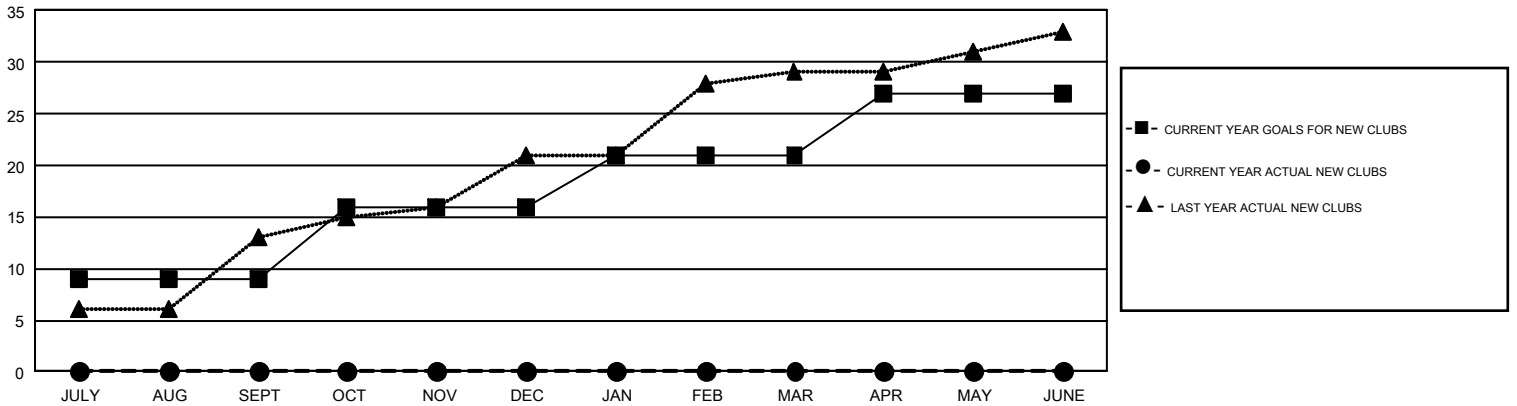
GMT Constitutional Area 6, Group F

GMT: OPEN

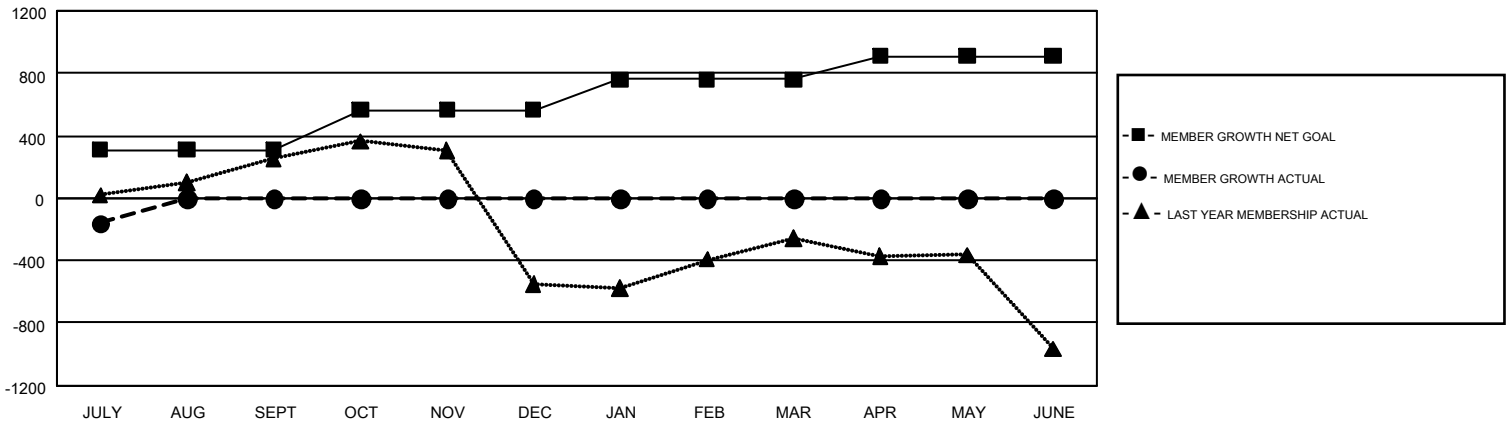
REPORT DOES NOT INCLUDE CLUBS IN UNDISTRICTED AREAS.

Clubs				Members			
RESULTS FOR 2019-2020				RESULTS FOR 2019-2020			
QUARTER	NEW CLUB GOAL	NEW CLUBS	DROPPED CLUBS	QUARTER	MEMBER GROWTH NET GOAL	MEMBER GROWTH ACTUAL	DROPPED MEMBERS ACTUAL (including transfers)
JULY/AUG/SEPT	9	0	2	JULY/AUG/SEPT	310	222	332
OCT/NOV/DEC	7	0	0	OCT/NOV/DEC	255	0	0
JAN/FEB/MAR	5	0	0	JAN/FEB/MAR	195	0	0
APR/MAY/JUNE	6	0	0	APR/MAY/JUNE	150	0	0

GOALS AND ACTUAL NEW CLUBS CUMULATIVE



GOALS AND ACTUAL MEMBERS CUMULATIVE



DROPPED CLUBS: 2	43 CLUBS OF 414 ADDED 1 OR MORE NEW MEMBERS	GENDER DISTRIBUTION MALE 11,725 (78.68%) FEMALE 3,177 (21.32%)
DROPPED MEMBERS DECEASED 2 CLUB CANCELLED 14 OTHER 316 <hr/> TOTAL 332	CLICK HERE FOR CUMULATIVE MEMBERSHIP DATA	TOTAL FAMILY UNIT MEMBERS 4,021 FAMILY MEMBERS PAYING HALF DUES 2,425